

1. A patient in a study is treated with an antibiotic for an infection. Researchers observe that most of the beneficial *Acidophilus* bacteria in her gut are killed, but some do not seem affected by the antibiotic. When she is treated again a week later, some are killed, but *most* now seem unaffected. This observation provides evidence for:
 - A. Gene flow
 - B. Genetic drift
 - C. Mutation
 - D. Natural selection
 - E. Vicariance

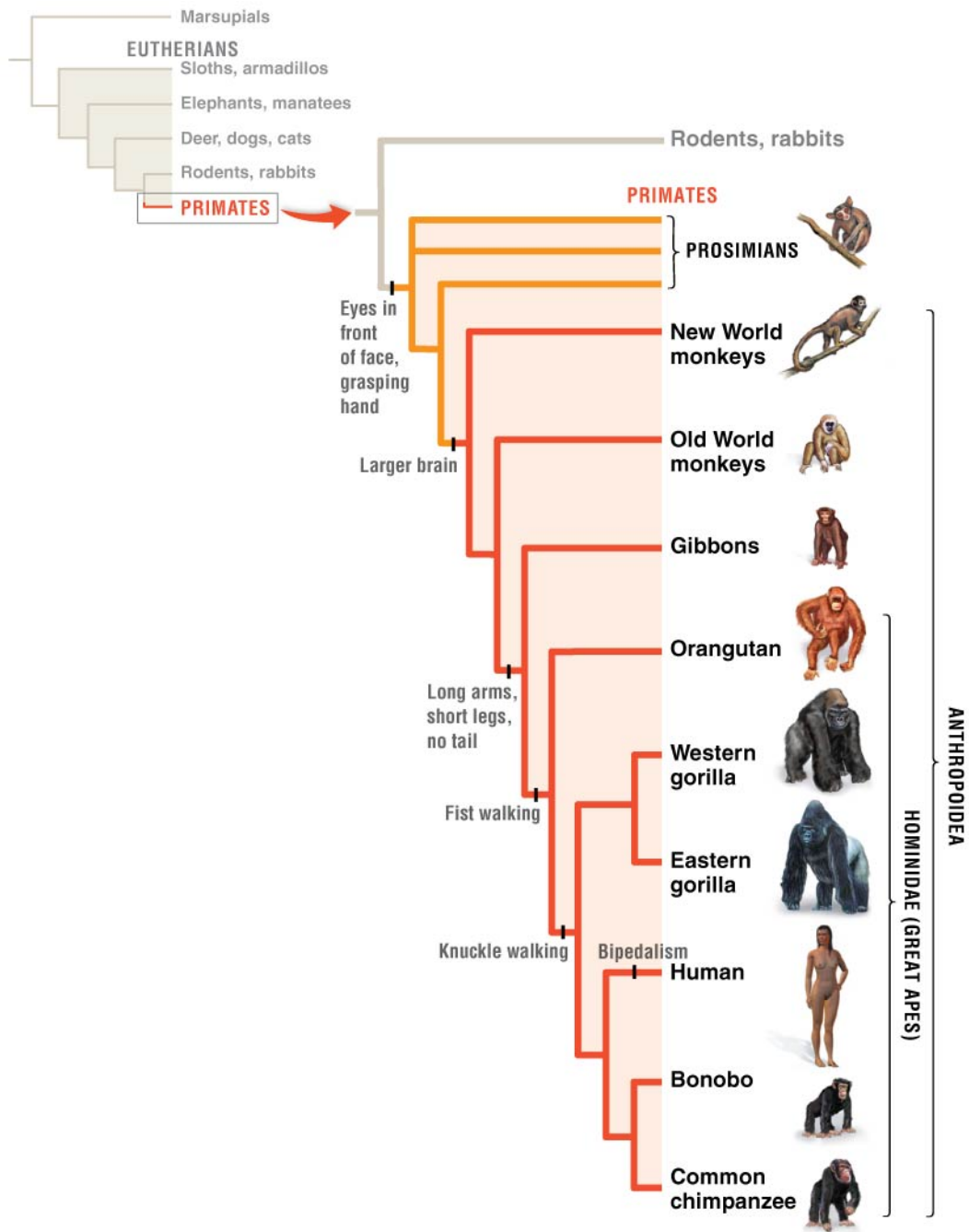
2. One characteristic trait that distinguishes apes from monkeys is that apes are better at:
 - A. Sitting
 - B. Climbing
 - C. Leaping
 - D. Seeing
 - E. Hanging

3. The best way to tell the sex of a hominin skeleton is from the:
 - A. skull
 - B. rib cage
 - C. hips
 - D. teeth
 - E. feet

4. It is *not* likely that upright posture in hominins evolved as an adaptation to:
 - A. help with keeping cool
 - B. adjust to an environment with more trees
 - C. help with harvesting food
 - D. help with carrying food

5. The rapid evolution of flowering plants likely influenced primate evolution in many ways. Which of the possible influences below is the *most* likely?
 - A. Increasing the number of mutations that occurred
 - B. Making new adaptive opportunities available
 - C. Increasing gene flow
 - D. Reducing gene flow
 - E. Increasing competition

6. You discover a fossil mammal with eye sockets that are conspicuously far apart. This likely indicates that this animal
- A. Was active in the daytime
 - B. Was active at night
 - C. Was a predator
 - D. Was a target for predators
7. Most mutations are _____. Natural selection tends to favor mutations which are _____.
- A. beneficial; beneficial
 - B. beneficial; deleterious
 - C. deleterious; beneficial
 - D. deleterious; deleterious
8. Researchers are studying a zone where two different closely related species of owl have come together due to expansion of their ranges. The species mate freely with each other, and produce viable hybrids. The researchers speculate that, if they hybrids have high fitness, the species may eventually display
- A. Allopatry
 - B. Dispersal
 - C. Fusion
 - D. Reinforcement
 - E. Exclusion



© 2014 Pearson Education, Inc.

9. According to the picture above, which of the following is a clade?
- A. Prosimians
 - B. Monkeys
 - C. Gibbons, orangutans and gorillas
 - D. Humans, bonobos and chimpanzees

10. According to the picture above, what is the sister taxon of gibbons?
- A. Prosimians
 - B. Monkeys
 - C. Orangutans
 - D. Orangutans, eastern gorillas and western gorillas
 - E. Great apes

Short-answer questions

Answer questions *in pen*. *Briefly* show necessary work and equations. Points may be *deducted* for wrong information, even when the correct information is also there.

11. We said in class that human characteristics likely evolved by “looping” between different characteristics.

a) What is meant by looping in this context (2 points)?

b) Give an example of three characteristics that were likely involved in the same loop in hominin evolution (3 points). Use commas, only the first three listed will be marked.